

Where Your Money Goes - Breakdown of 2011 Giving as of June 8, 2011

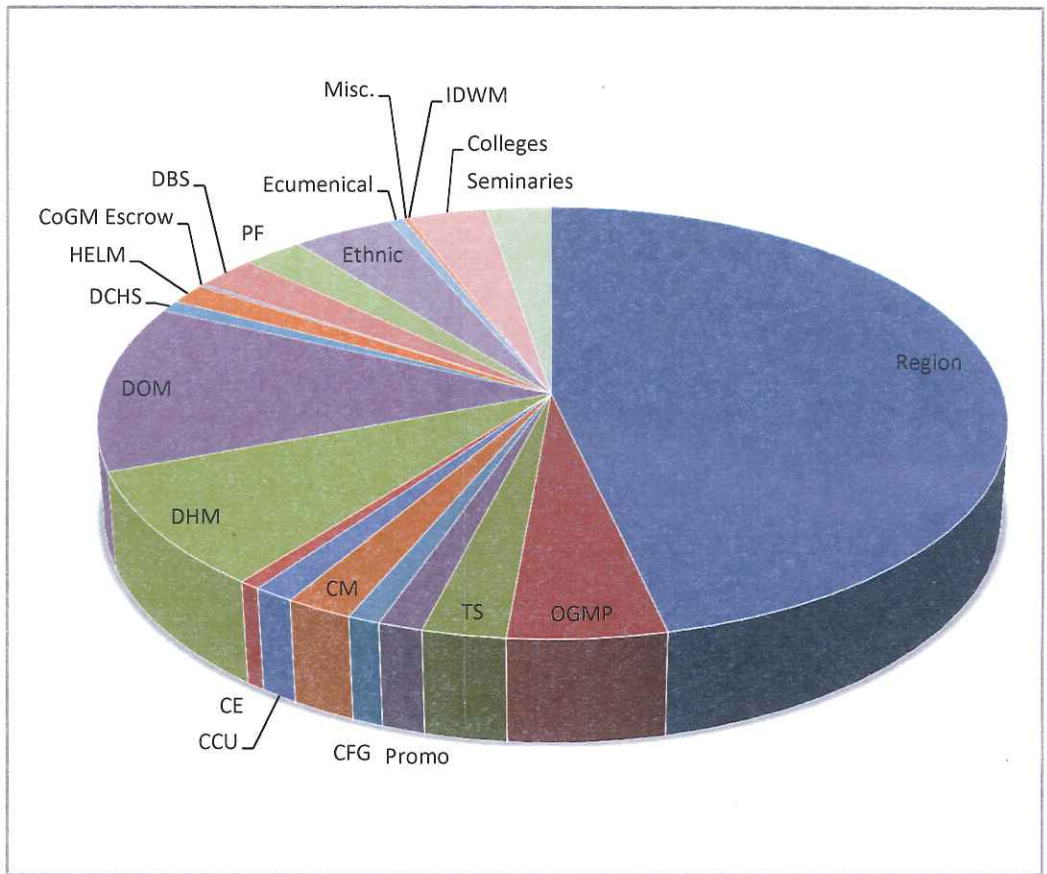
Church ID #: 210009

Region: Capital Area

Congregation	Address	City	State	Zip
First Christian Church	5802 ROLAND AVE	BALTIMORE	MD	21210-1398

Fund	Total
Disciples Mission Fund - Church-wide Outreach Fund	\$ 1,840.10
Blessing Boxes	\$ -
Easter - Benefits General Ministries	\$ 439.34
Pentecost - Benefits New Church Ministries	\$ -
Thanksgiving - Benefits Institutions of Higher Education	\$ -
Christmas - Benefits Ministries in Your Region	\$ 65.00

Where Your Money Goes			
	abbr.	amount	%
Capital Area	Region	\$ 1,087.92	46.40%
Office of General Minister and President	OGMP	\$ 116.66	4.98%
Treasury Services	TS	\$ 61.79	2.64%
Promotion Ministries	Promo	\$ 32.90	1.40%
Center for Faith & Giving	CFG	\$ 23.78	1.01%
Communication Ministries	CM	\$ 49.48	2.11%
Council on Christian Unity	CCU	\$ 29.91	1.28%
Church Extension	CE	\$ 15.63	0.67%
Disciples Home Missions	DHM	\$ 206.09	8.79%
Division of Overseas Ministries	DOM	\$ 292.85	12.49%
Disciples of Christ Historical Society	DCHS	\$ 20.13	0.86%
Higher Education and Leadership Ministries	HELM	\$ 35.90	1.53%
CoGM Common Project Fund	CoGM Escrow	\$ 4.33	0.18%
Disciples Benevolent Services	DBS	\$ 58.41	2.49%
Pension Fund	PF	\$ 56.71	2.42%
CPOHM/NAPAD/National Convocation	Ethnic	\$ 95.57	4.08%
Ecumenical Ministries	Ecumenical	\$ 13.78	0.59%
Christmount, National City, World Convention	Misc.	\$ 6.19	0.26%
International Disciples Women's Ministries	IDWM	\$ -	0.00%
Disciples Colleges	Colleges	\$ 75.54	3.22%
Disciples Seminaries	Seminaries	\$ 60.89	2.60%



2011 Giving Breakdown		
Total Giving to DMF and Special Day =	\$	2,344.44
Giving to Region =	\$	1,087.92
Giving to Higher Education =	\$	136.43
Giving to General Ministries =	\$	1,120.10

To access this report via the web, please visit www.disciplesmissionfund.org